



THE Locum Times



MEDPARTNERS LOCUM TENENS NEWSLETTER: SUMMER 2018 VOLUME 3, EDITION 2

CONTENTS

MEDPARTNERS LOCUM TENENS NEWSLETTER



Why Empathy is Crucial for
Success as a Locum Tenens
Provider

3



The Impact of Technology on
the Doctor-Patient Relationship

5



MedPartners Locum Tenens
in the Community

7



Travel News

8



Hot Jobs

11

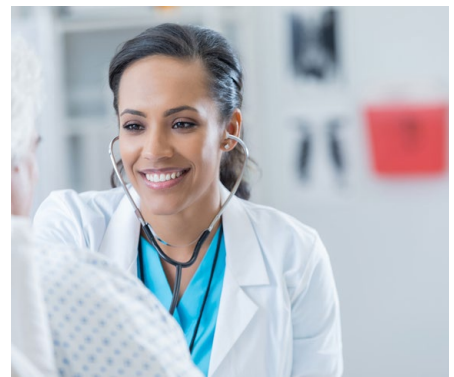


LET'S GET SOCIAL:

WE LIKE YOU, BUT HAVE YOU LIKED US YET?



WHY EMPATHY IS CRUCIAL FOR SUCCESS AS A LOCUM TENENS PROVIDER



Empathy is a crucial trait for any healthcare provider, but it especially holds weight for providers in the locum tenens field. The fast-paced nature of locum tenens work demands that providers know how to quickly adapt and work with many types of people and patients in an entirely new setting. If you're exploring a locum tenens career, you must embrace empathy in your practice to truly excel in the field.

First, to be successful in locum tenens assignments, providers must have an ability to quickly connect with their teams and patients within the short duration of time they have with them. Expressing a certain degree of empathy will allow for more meaningful relationship-building during assignments, which will in turn result in better quality of care delivered to your patients.

Empathy is also essential for building a foundation of teamwork and communication. Locum tenens

providers must exhibit emotional intelligence and know how to work well with new colleagues who may have varying work ethics and ways of doing things. Being able to understand others' points of view and adjust to the practices and protocols of your new department creates a better working environment for everyone.

Lastly, empathy creates a more rewarding professional experience at large. As a locum tenens provider, you must be able to see situations from your patients' points of view. The ability to show understanding and compassion for your patients' health concerns and conditions will go a long way in providing the

best patient care experiences possible during your assignments.

Exemplifying empathy in your locum tenens work will put you on a clear path to success in the field. More importantly, demonstrating a strong sense of empathy will help you create memorable personal and professional experiences throughout your entire locum tenens career.

ARE YOU READY TO EXPLORE EXCITING LOCUM TENENS OPPORTUNITIES?

Learn how [MedPartners Locum Tenens](#) can put you on the track to success!

CALENDAR OF EVENTS



**Annual MAPRA Conference
(Mid-Atlantic Physician
Recruiter Alliance)**
August 9 - 10, 2018
Philadelphia, PA

**Clinical Congress 2018
(American College of
Surgeons (ACS))**
October 21 - 26, 2018
Boston, MA

**SEPRA 2018 National
Education Conference
(Southeast Physician Recruiter
Association)**
October 22 - 23, 2018
Atlanta, GA

**American Academy
of Pediatrics National
Conference & Exhibition**
November 2 - 6, 2018
Orlando, FL





THE IMPACT OF TECHNOLOGY ON THE DOCTOR-PATIENT RELATIONSHIP

There is no denying that technology has always been closely intertwined with advancements in healthcare. While technology has enabled the creation of ever more sophisticated diagnostic resources and treatment options, it has also had a profound impact on the human side of the equation. Whether you are a provider working in a practice, at a hospital or clinic, or you are a locum tenens provider in any of these settings, you have likely encountered ways in which changing technology is impacting the provider-patient relationship.

WEARABLE TECHNOLOGY

The “wearable” healthcare technology category encompasses a very wide range of devices in various stages of development, ranging from pills that can detect when they have been taken to devices similar to fitness trackers that can measure data such as heart rate, sleep activity, and movement. When it comes to wearable healthcare technology, there are many

applications that could help providers gather better patient data in a less intrusive manner. Passive monitoring could allow for a better overall picture of a patient’s vitals and habits while collecting information with better accuracy than self-reporting. Although there has been a great deal of interest in wearable technology in the healthcare field, there is room for more refined research into the impact on actual patient care outcomes.

HEALTHCARE APPS

There are many different health related apps out there these days covering a wide range of topics from nutrition and exercise to disease-specific guides. Many patients feel that this has let them

take better control of their health and some physicians have embraced this attitude by recommending certain apps for patients based on their treatment plans. Working in concert with this new technology can help doctors increase patient follow through on treatment.

In addition to these patient-focused apps, there is a growing field of apps for providers. These physician-focused apps have the [potential to help providers](#) with tasks such as test ordering and diagnostic decision-making. This field is still in its infancy, however, as many of these apps need to be evaluated before physicians can truly begin to depend on them.





TELEMEDICINE / TELEHEALTH

Related to healthcare apps, and often integrated into them, is telemedicine functionality. Technology has made it possible for providers to interface with patients through video conferencing in order to take care of common ailments while the patient remains in the comfort of their own home. Some insurance companies have begun to embrace this cost effective measure, allowing patients to receive expert medical advice for as little as \$10 for a video call, avoiding costly urgent care clinic fees and keeping patients from spreading illness. This has been a boon for many patients, such as new parents with urgent questions for doctors at odd hours, as evidenced by the [new partnership between American Well and Philips to create the Philips Avent uGrow app with telehealth options.](#)

ARTIFICIAL INTELLIGENCE (AI)

FDA Commissioner Scott Gottlieb, MD, recently expounded on the [possibilities for AI in healthcare.](#) AI-powered healthcare tools could open up a new world of diagnostic and treatment possibilities tailored to individual patient needs. This could give providers far more information to work with as well as the ability to utilize electronic health records in more sophisticated ways to help their patients. Uniting AI and the human element could open up many new possibilities for helping people while still maintaining the ever important human touch. As Gottlieb stated, "These efforts also will help us develop new approaches for understanding variations in individual patient experience using diverse data sets from clinical trials, EHRs and biometric monitoring devices."

Are you a provider looking for your next opportunity?

[View our locum tenens job openings here](#) and send in your CV today!



JOB ALERTS

Sign up for our Job Alerts and get new job openings delivered straight to your inbox or smartphone.

MEDPARTNERS LOCUM TENENS IN THE COMMUNITY



SOCIETY OF HOSPITAL MEDICINE

Our hospitalist team headed over to Orlando, FL for the Society of Hospital Medicine's annual conference. We enjoyed the conference very much and it was great to have the opportunity to meet so many of you!



#MSDSTRONG BLOOD DRIVE

Courtesy of [OneBlood](#), we held a special #MSDstrong Blood Drive along with our friends at TekPartners. According to OneBlood, each whole blood donation has the potential to save up to three lives. Thank you to everyone who came out to help save lives by donating their blood!



ASPR

Our "Chicago Legends" recently headed out to the windy city for the ASPR Annual Conference! The team was a big hit in their gear and everyone had a blast at the conference as well as our special cocktail hour event. Can't wait to see you next year!



CORPORATE RUN

Our team participated in the Mercedes-Benz Corporate Run in Fort Lauderdale in April. The event is a special tradition for MedPartners Locum Tenens, but this year had even more meaning for us as we wore maroon to show our love for the Parkland community and Marjory Stoneman Douglas High School.



RISING AIRFARE & HOTEL RATES

Have you noticed the seemingly skyrocketing airfare and hotel rates lately? Have you ever been curious about the reasons behind these significant increases? Here's why they happen:

Fuel costs have historically been related to consumer airfare fluctuations – no surprise here. But travelers should be warned: the rising cost of oil over the past few months has made an impact on airfare and will continue to do so in the future. This is in response to a sudden spike in the price of oil to around \$70 per barrel - that is a 50% rise since June of 2017.

If you are planning to travel internationally, you should expect to see higher ticket prices there as well. Even before the rise in oil costs, international flights were on the rise and will continue to increase between 3-5% for business class fares to and from North America.

Meanwhile, hotel pricing can be affected by a number of different factors, including the demand, political climate, security, alternative lodging options, and the business/leisure ratio in an area. According to Travel Inc., the average hotel rate in the U.S. is up 2.6% to \$177.36. Even corporate negotiated rates have been on the rise since the previous year.



BIOMETRIC CHECK-IN SYSTEM FOR DELTA SKY CLUBS

The list of benefits for CLEAR, a biometric technology used to identify travelers, has broadened! If you have CLEAR membership in addition to membership for Delta Sky Club, you are now able to use your fingerprints to check into Sky Club locations. For more information on CLEAR technology or to enroll, visit www.clearme.com. What will CLEAR give access to next?

CHECK OUT THESE APPS

Download some of the latest trending apps for busy travelers on the go. They'll be sure to ease the stress of your business travel routines.

- **LoungeBuddy** – Purchase lounge access at any airport and lounge with no memberships, elite status, or 1st Class tickets needed! Access starts at \$25 worldwide. www.loungebuddy.com
- **ParkWhiz** – Locate the best parking and prices in unfamiliar cities. Simply prepay to reserve your spot and park! www.parkwhiz.com
- **AwardWallet** – Monitor all of your frequent guest programs in one app. awardwallet.com



EXCITING LOYALTY PROGRAM UPDATES

- **Hilton Loyalty Program**– If you are a Hilton Honors member with Elite-tier status, you will notice an increased bonus of 20% for Silver, 80% for Gold, and 100% for Diamond members. On the other hand, members will not be able to rack up airline points from their hotel stays. These changes went into effect on April, 1st, 2018.
- **Marriott Merges** – Coming soon in August 2018, Marriott Rewards, Starwood Preferred Guest, and The Ritz-Carlton Rewards will be merging accounts into one loyalty program. Members of this unified loyalty program will soon enjoy perks from 29 hotel brands. This will allow members to earn points faster than before with no blackout dates. If you are currently a member of one of these programs, be on the lookout for more details!



COMPLETE SEATFINDER

The itinerary you view in Concur allows you to easily select and confirm requested seats on your flights. You will be able to choose your seats on the Review and Reserve page while making your reservation, or after the flight is confirmed in the trip itinerary.

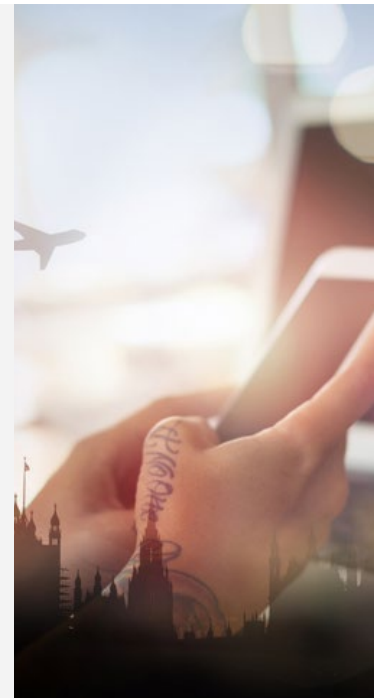
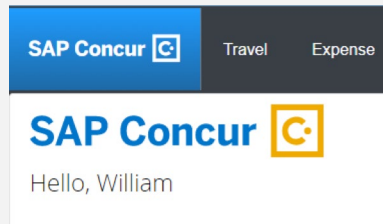
If you do not select a seat, Concur will automatically request your seats based on the preference indicated in your travel profile.

SELECT SEATS		
Select your preferred seats, otherwise Concur will request them for you based on your Profile.		
Flight		Seat
UA 1846	Economy (S)	Select a seat
UA 587	Economy (W)	Select a seat
UA 995	Economy (W)	Select a seat

CONCUR PROFILE MASKING

You may have noticed a few changes as Concur recently revamped its website and updated it with its new SAP Concur logo. In light of increased attention to consumer privacy, your birthday, medical data, passport number, and visa numbers will be masked by default. In addition, frequent-traveler, redress, and TSA pre-check numbers are also masked. Please note that the full frequent-traveler numbers will be displayed within itineraries.

This is a default setting and cannot be changed. You will still be able to add/modify these numbers if needed. If you need to obtain a number, such as a frequent-traveler program number, you may contact the Travel Department for assistance.



INTRODUCING THE NEW CONCUR AND TRAVEL INC. - TI APPS

If you have not downloaded these apps already, we recommend that you do so. These handy apps give you quick access to book and view your travel reservations.

Concur's new mobile app, now available for Apple and Android devices, allows you to easily book travel on the go with an updated user-friendly interface. The app has also partnered with Expensify to help keep track of your receipts all in one platform. Visit www.concur.com/en-us/mobile to find out more.

The new Travel Inc. - TI mobile app will provide you with the travel information you need at any time or place. View past, current, or upcoming trips in the palm of your hand. The app can even be linked to Concur's mobile app! For more information, visit www.travelinc.com/pdf/TI_Mobile_Awareness.pdf.

HOT JOBS



PSYCHIATRY

ADULT PSYCHIATRY PHYSICIAN
Stevens Point, WI

**PSYCHIATRIST - ADULT PHP/
IOP/SUBOXONE**
Hartford, CT

PSYCHIATRIST - IP ADULT
Grand Forks, ND

**PSYCHIATRIST - INPATIENT C/L
LOCUM**
Charlotte, NC

PSYCHIATRIST - IP C/A
Chicago, IL

PSYCHIATRIST- C/A INPATIENT
Gulfport, MS

TELEPSYCHIATRY
Greenville, NC

PEDIATRICS

NEONATOLOGIST
Harrisburg, PA

NEONATOLOGIST
Binghamton, NY

NEONATOLOGIST
Cherry Hill, NJ

PEDIATRIC HOSPITALIST
Hershey, PA

OB

OB/GYN
Cadillac, MI

OB/GYN
Salt Lake City, UT

HOSPITALISTS

HOSPITALIST
Damariscotta, ME

HOSPITALIST
Atlanta, GA

HOSPITALIST PHYSICIAN
Oxford, MS

EMERGENCY MEDICINE

EMERGENCY MEDICINE
Philadelphia, PA

EMERGENCY MEDICINE
Shelburne Falls, MA

EMERGENCY MEDICINE
Sturbridge, MA

EMERGENCY MEDICINE
Cummington, MA

SURGERY

GASTRO
Albuquerque, NM

ROBOTIC UROLOGY
Dallas, Texas

UROLOGIST
Miami, FL

UROLOGIST
Berlin, MD

CVT SURGERY
Muskegon, MI

ADVANCED PRACTICE

VASCULAR NP/PA
Aurora, CO

CRNA OUTPATIENT SURGERY
Cincinnati, OH

CRNA INPATIENT
Daytona, FL

NP/PA OUTPATIENT SURGERY
Scottsdale, AZ

CRITICAL CARE

CRITICAL CARE
Palm Coast, FL

CRITICAL CARE
Boston, MA

[See all job postings](#)